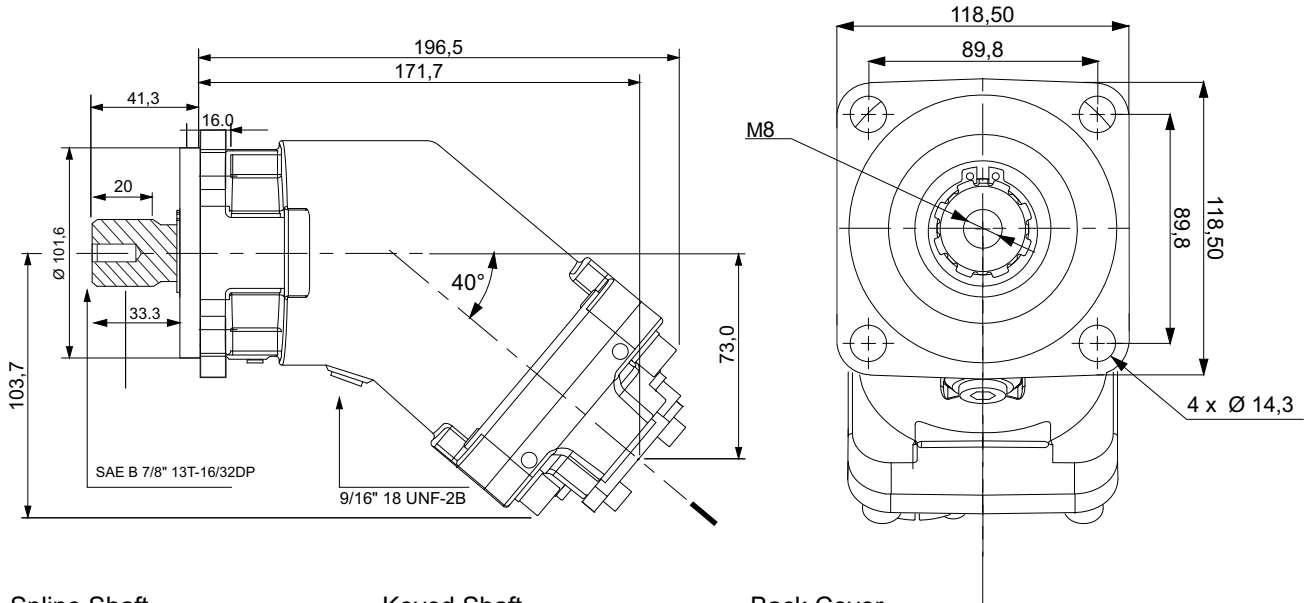


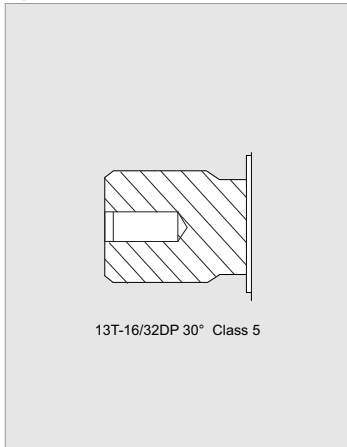
# 2PE 25 - SAE C - 4 BOLT

SAE B 7/8" 13T-16/32DP

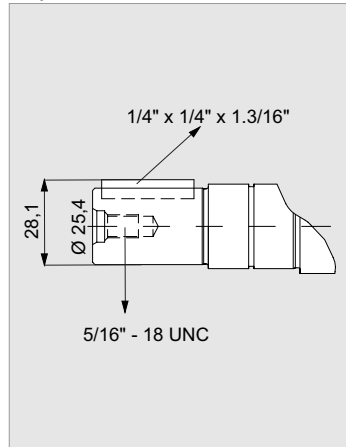
## SAE C - 4 BOLT MOUNTING (SAE J744)



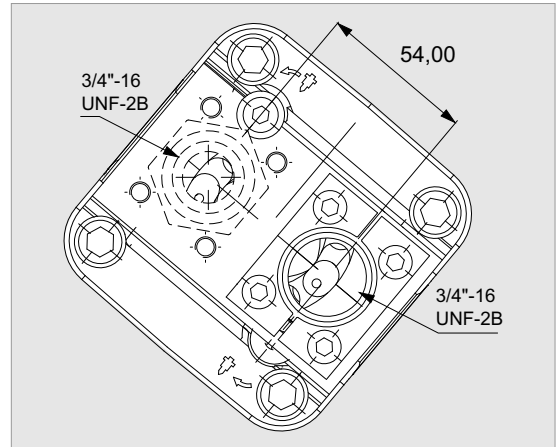
### Spline Shaft



### Keyed Shaft



### Back Cover



Flow, Speed, Pressure List of 2PE 25

|                                     |          |
|-------------------------------------|----------|
| <b>x 1000 rpm</b>                   | 25,00 cc |
| <b>x 1500 rpm</b>                   | 37,50 cc |
| <b>Max. Continuous Pump Speed</b>   | 2300 rpm |
| <b>Max. Limited Pump Speed</b>      | 2700 rpm |
| <b>Max. Continuous Pressure</b>     | 350 bar  |
| <b>Max. Intermit. Peak Pressure</b> | 400 bar  |
| <b>Max. Torque at 350 bar</b>       | 146 Nm   |
| <b>Weight without inlet fitting</b> | 10,50 kg |
| <b>Weight with inlet fitting</b>    | 10,90 kg |
| <b>Rotation</b>                     | CW-CCW   |

