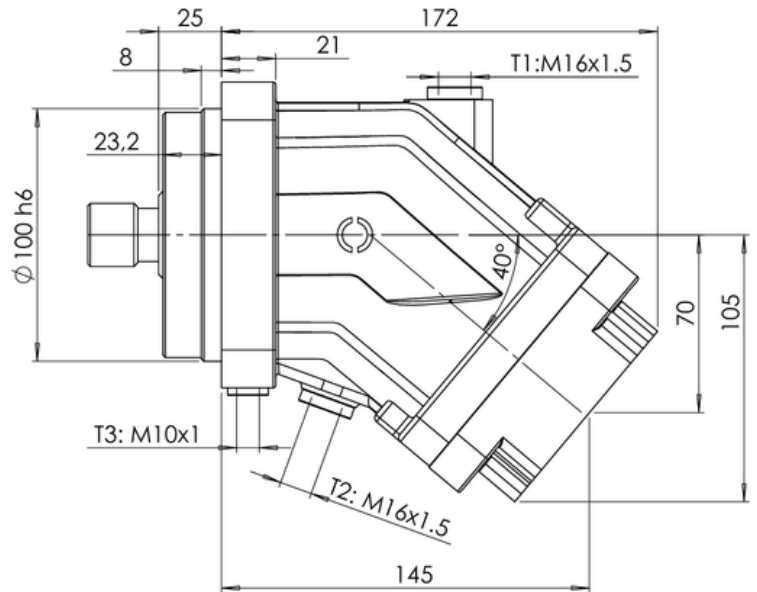
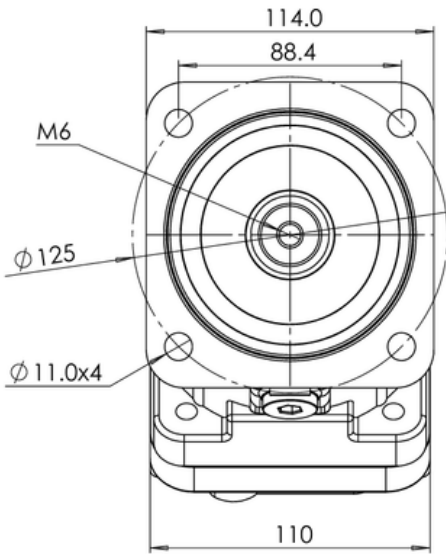


MOUNTING FLANGE (ISO3019-2)

-ISO 4h Ø100



-PORTING OPTIONS



REAR (R)



SIDE (S)

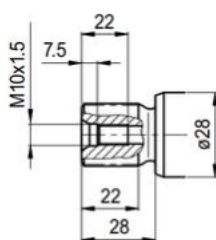


REAR+SIDE (RS)

-SHAFT

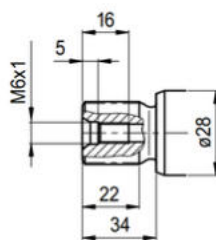
S1

Splined shaft DIN 5480
W25x1.25x18x9g



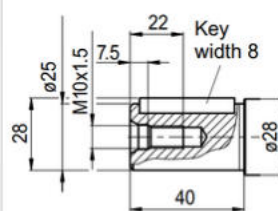
S2

Splined shaft DIN 5480
W20x1.25x14x9g



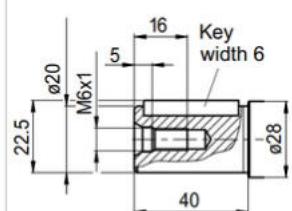
K1

Parallel keyed shaft
DIN 6885, AS8x7x32

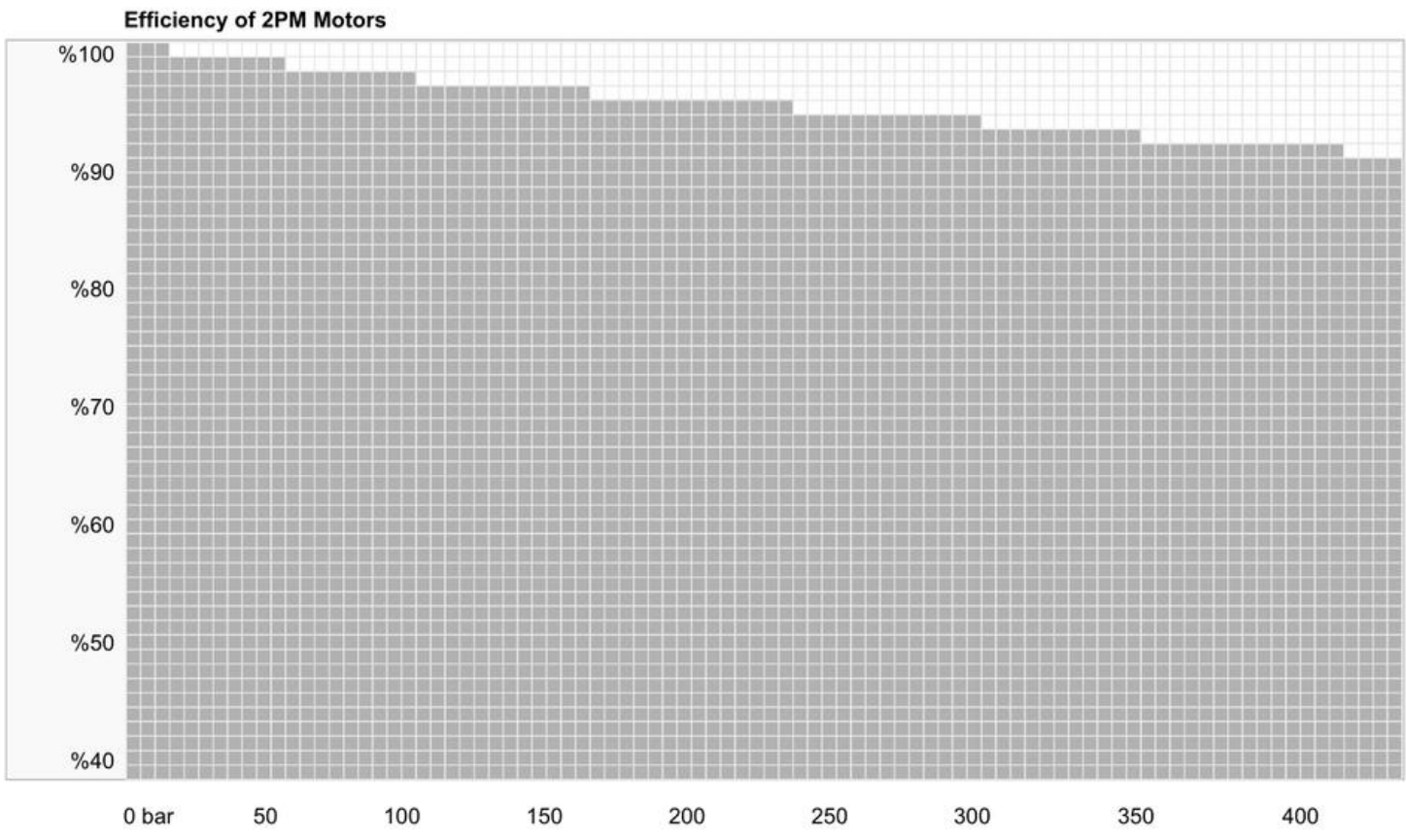


K2

Parallel keyed shaft
DIN 6885, AS6x6x32



MECHANICAL EFFICIENCY

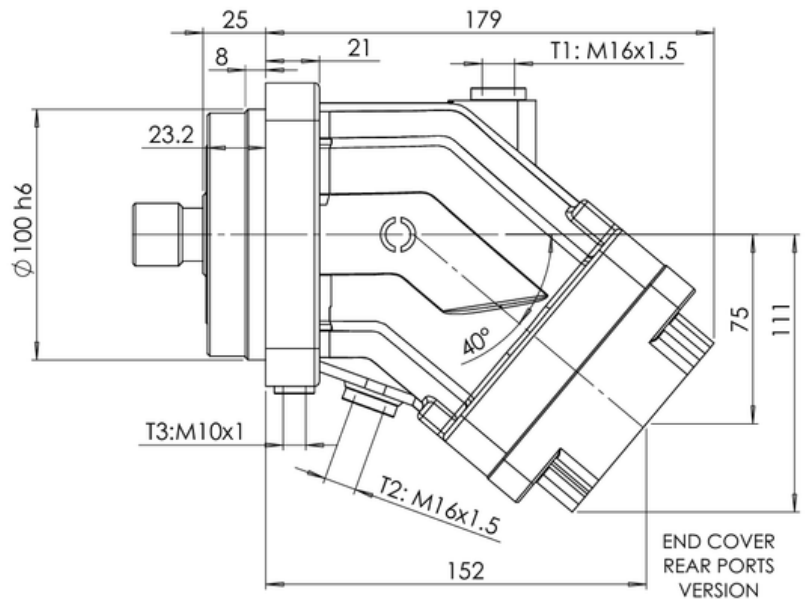
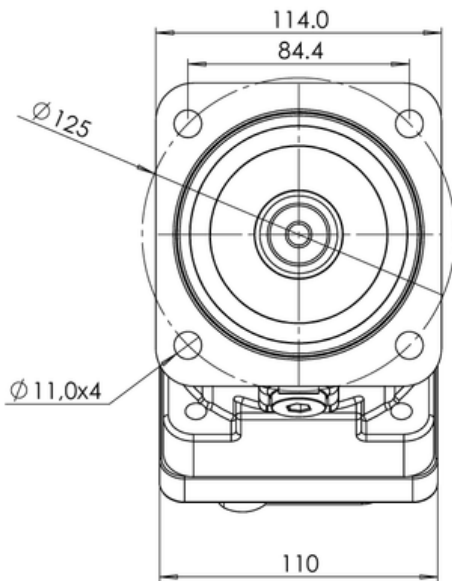


Volumetric efficiency of 2PM Motors are 95%-99%

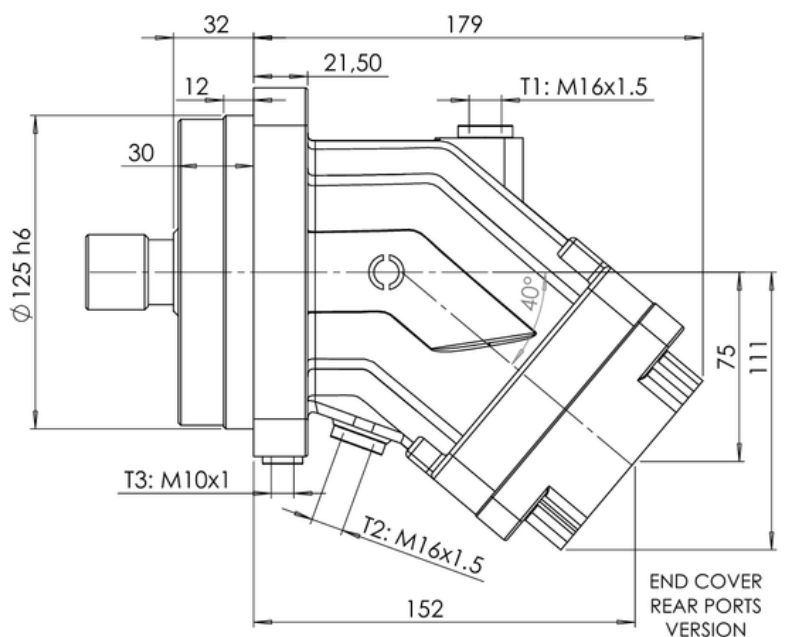
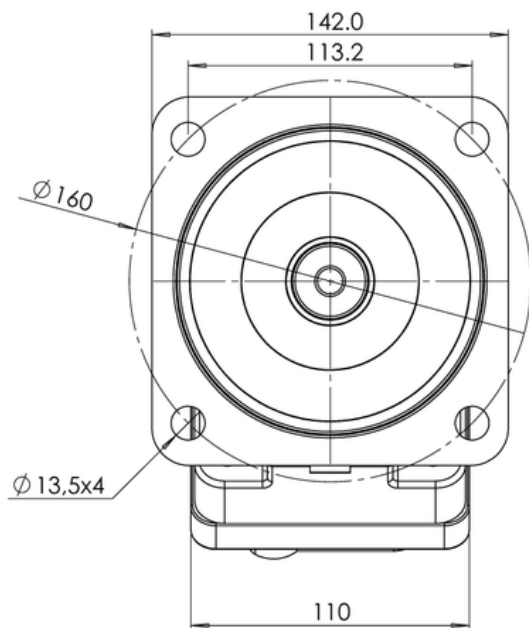


MOUNTING FLANGE (ISO3019-2)

-ISO 4h Ø100



-ISO 4h Ø125



-PORTING OPTIONS

▼ SAE FLANGE REAR PORTS AVAILABLE (SAE 3/4 (6000 PSI) x2) HIGH PRESSURE SERIES, Ordering Code: FS



REAR (R)



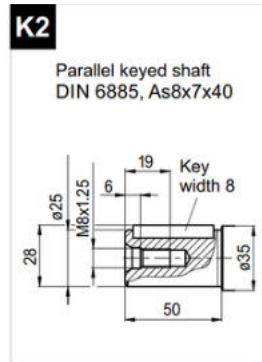
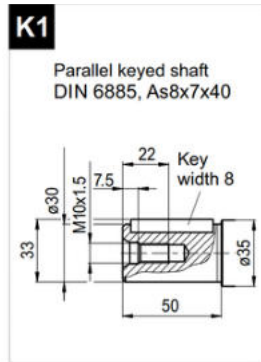
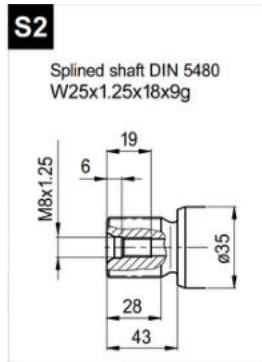
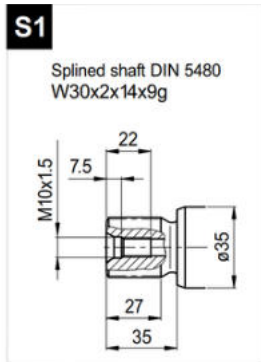
SIDE (S)



REAR+SIDE (RS)

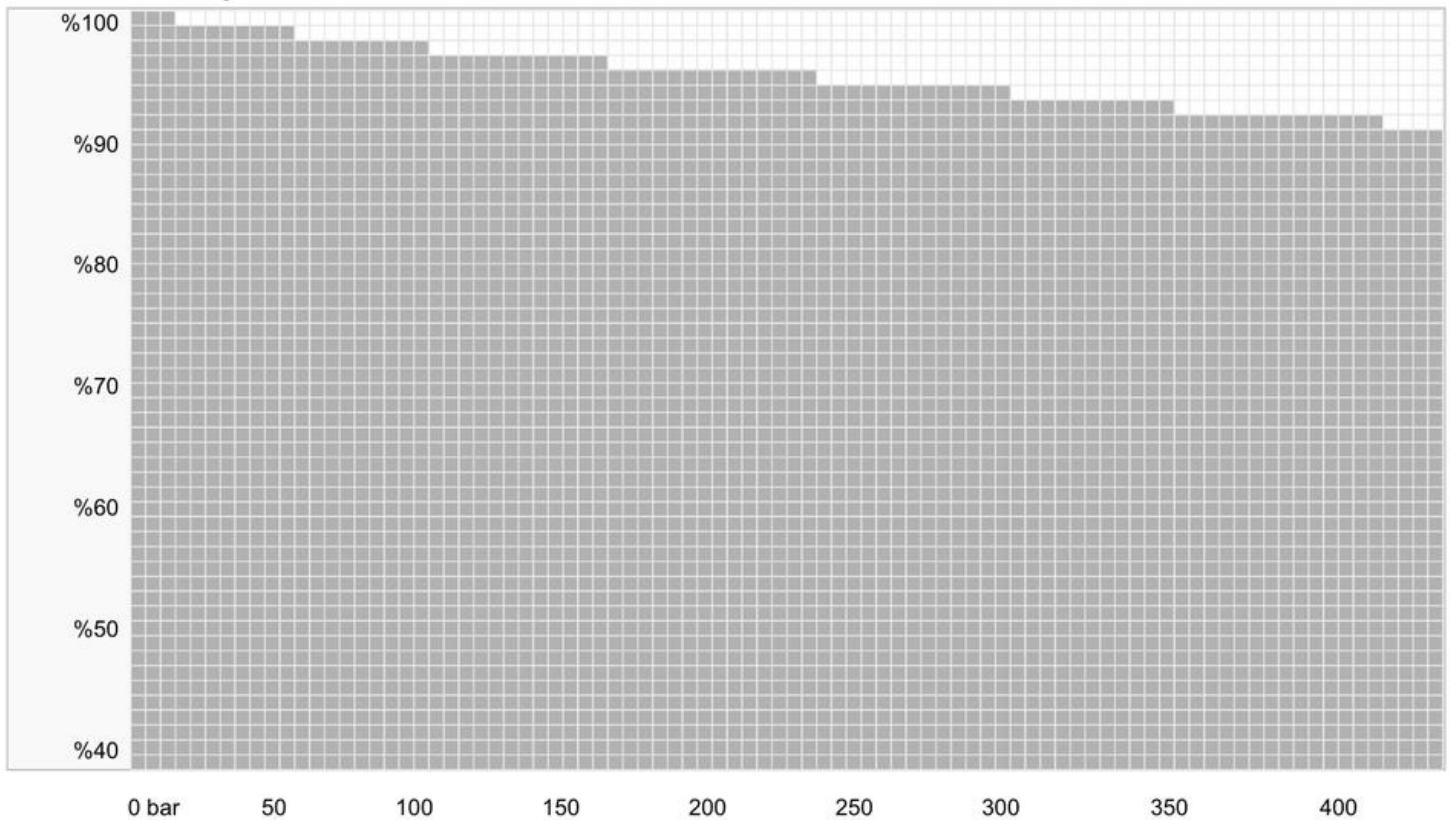


-SHAFT OPTIONS



MECHANICAL EFFICIENCY

Efficiency of 2PM Motors

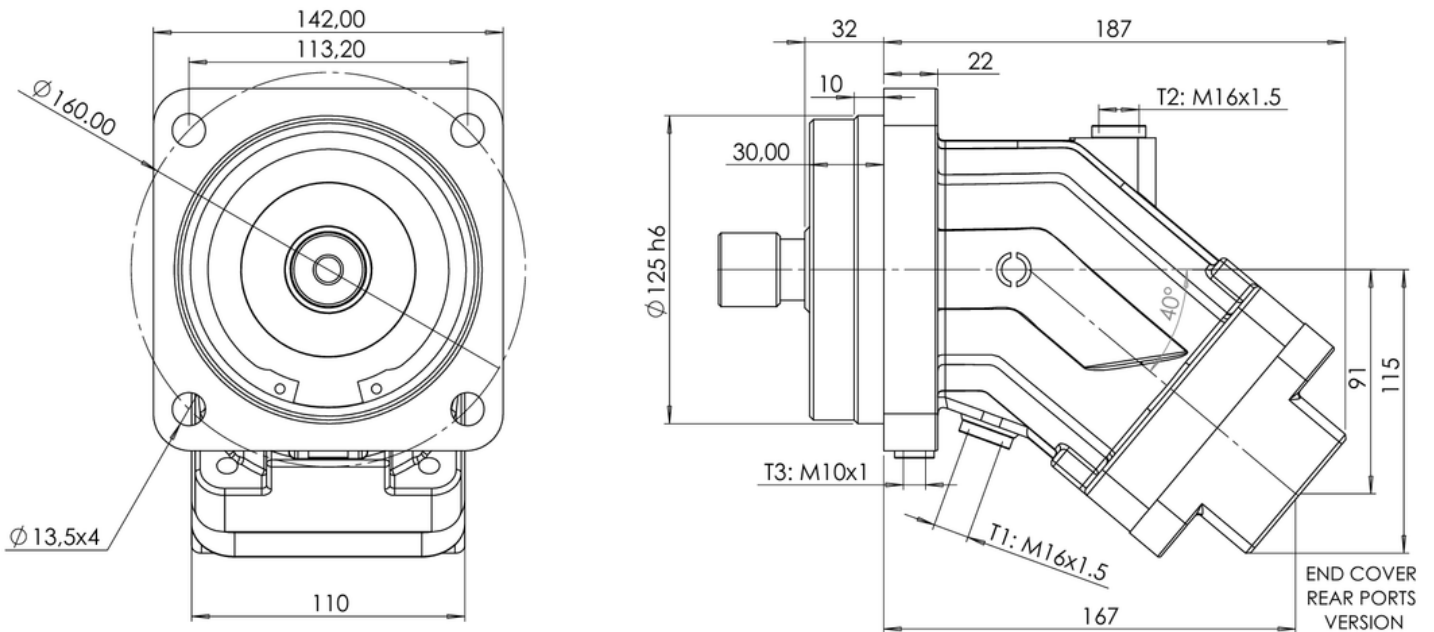


Volumetric efficiency of 2PM Motors are 95%-99%



MOUNTING FLANGE (ISO3019-2)

-ISO 4h Ø125



-PORTING OPTIONS

▼ **SAE FLANGE REAR PORTS AVAILABLE (SAE 1" (6000 PSI) x2) HIGH PRESSURE SERIES, Ordering Code: FS**



REAR (R)

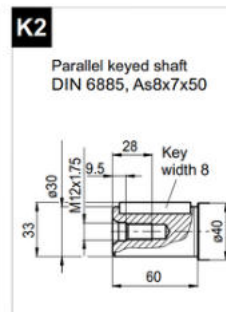
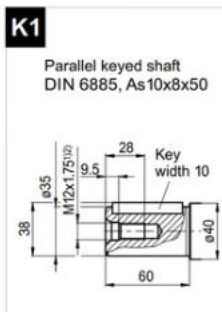
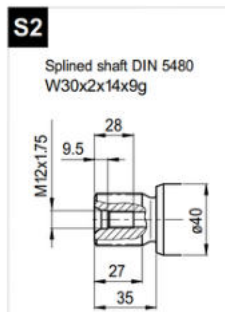
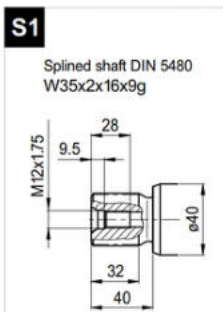


SIDE (S)

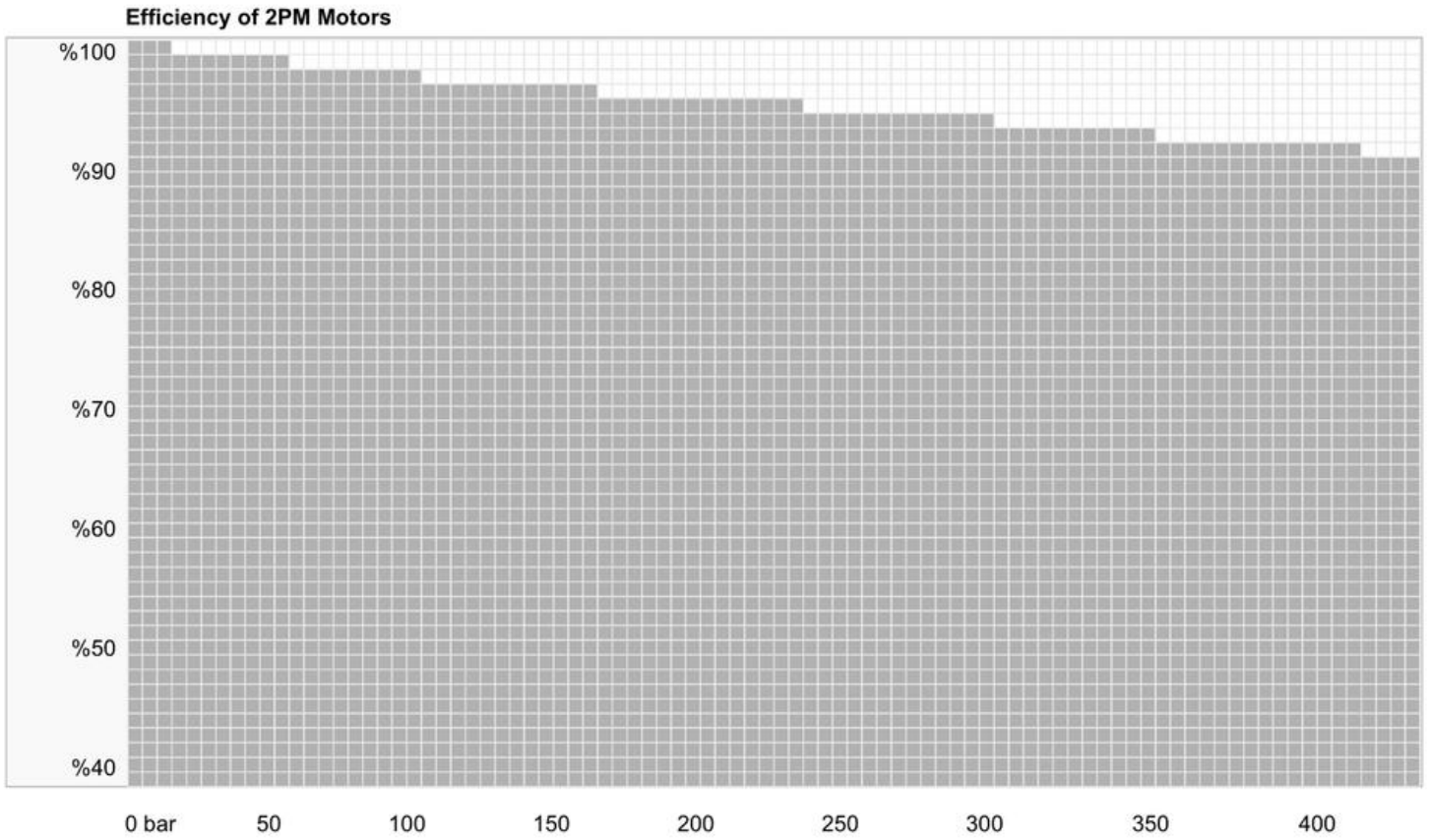


REAR+SIDE (RS)

-SHAFT OPTIONS



MECHANICAL EFFICIENCY



Volumetric efficiency of 2PM Motors are 95%-99%



C-2PM: Ordering Code and Specifications Table

Type Code	Displacement (cm3)	Rotation	Version	Sealing	End Cover	Mounting Flange	Shaft
C-2PS	12,18,25,32,40,50,63	R, L (cw,ccw)	Special Classic (S,C)	Nitrile, Viton (N,V)	Rear, Rear Suction & Rear + Side Peassure (PSR)	According the Specifi-cations	According the Specifi-cations

ISO 3019-2

		12	18	25	32	40	50	63
142	ISO 4h Ø100	•	•	•	•	•		
143	ISO 4h Ø125				•	•	•	•

S1	S2	K1	K2
----	----	----	----

S: Splined

Thread Specifications

- *With ISO6149 and BSP thread options
- BSP on request

	(R)	(S)	(RS)
12	M27x2	M27x2	M27x2 (4)
18	M27x2	M27x2	M27x2 (4)
25	M27x2	M27x2	M27x2 (4)
32	M33x2	M33x2	M33x2 (4)
40	M33x2	M33x2	M33x2 (4)
50	M33x2	M33x2	M33x2 (4)
63	M33x2	M33x2	M33x2 (4)

Ordering Code Example;

- End cover RSS
- Sae thread

ISO 6149 (I)	BSP (B)	SEA O-Ring Boss (S)
M27x2	63/4"	1 1/16 - 12 Un-2B
M33x2	61"	1 5/16 - 12 Un-2B
M27x2	M27x2	15/8" - 12 Un-2B

- High vibration resistance and 630 bar pressure limit.
- SAE Flange 3/4" 6000 PSI x 2 High pressure series Rear Ports available for 32-40 cc
- SAE Flange 1" 6000 PSI x 2 High pressure series Rear Ports available for 50-63 cc

