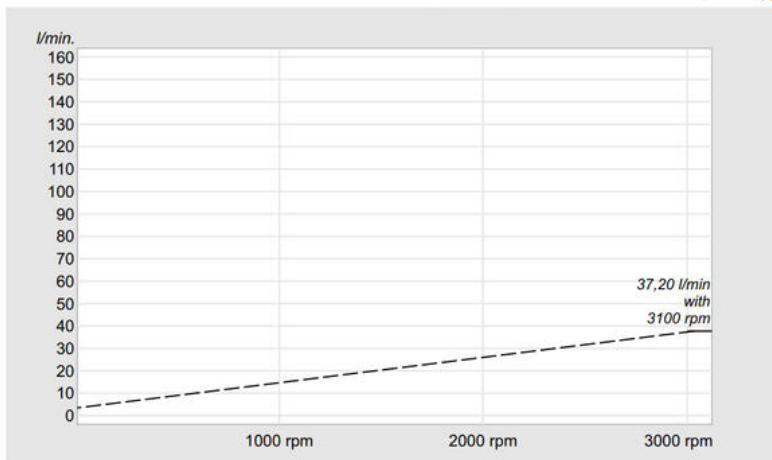


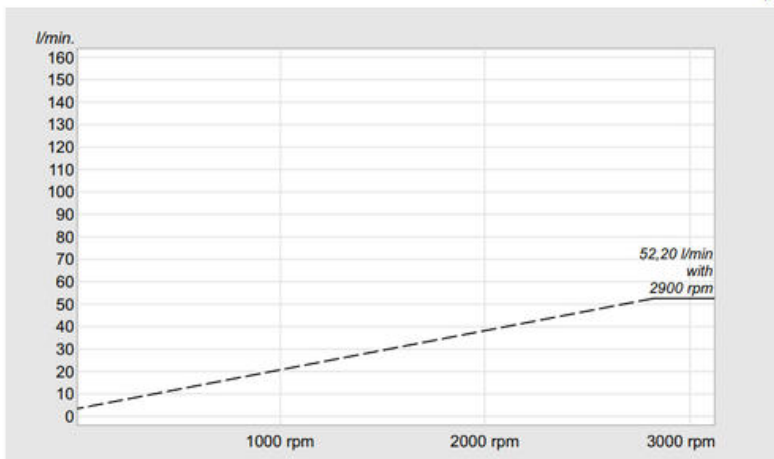
x 1000 rpm	12,00 cc
x 1500 rpm	18,00 cc
Max. Continuous Pump Speed	2300 rpm
Max. Limited Pump Speed	3100 rpm
Max. Continuous Pressure	350 bar
Max. Intermit. Peak Pressure	400 bar
Max. Torque at 350 bar	71 Nm
Weight without inlet fitting	9,00 kg
Weight with inlet fitting	9,40 kg
Torque without inlet fitting	8,70 N.m
Torque with inlet fitting	9,15 N.m
Rotation	CW-CCW
Fluid	Min.B.Hyd.Oil

12



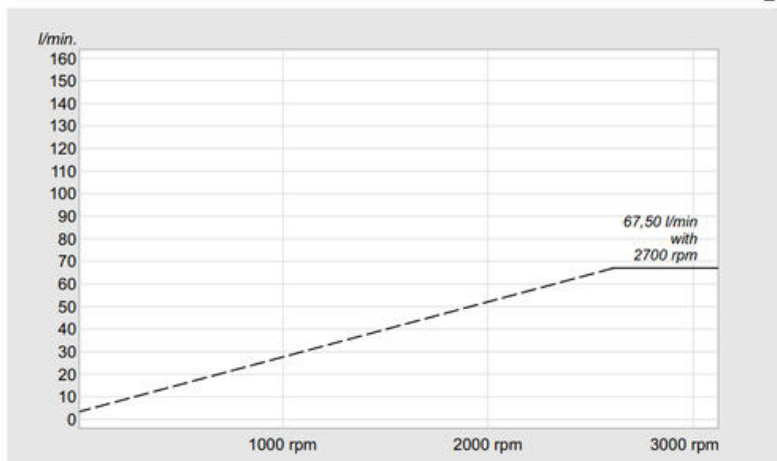
x 1000 rpm	18,00 cc
x 1500 rpm	27,00 cc
Max. Continuous Pump Speed	2300 rpm
Max. Limited Pump Speed	2900 rpm
Max. Continuous Pressure	350 bar
Max. Intermit. Peak Pressure	400 bar
Max. Torque at 350 bar	105 Nm
Weight without inlet fitting	9,00 kg
Weight with inlet fitting	9,40 kg
Torque without inlet fitting	8,75 N.m
Torque with inlet fitting	9,19 N.m
Rotation	CW-CCW
Fluid	Min.B.Hyd.Oil

18



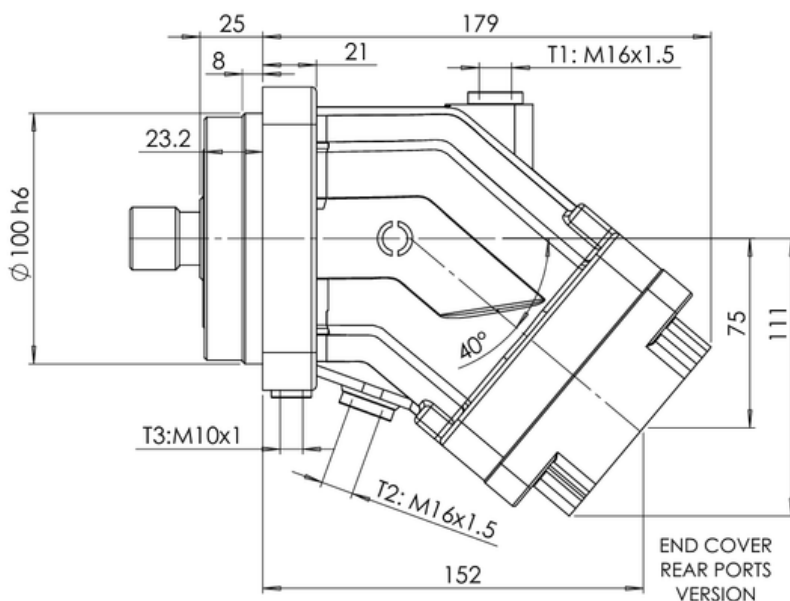
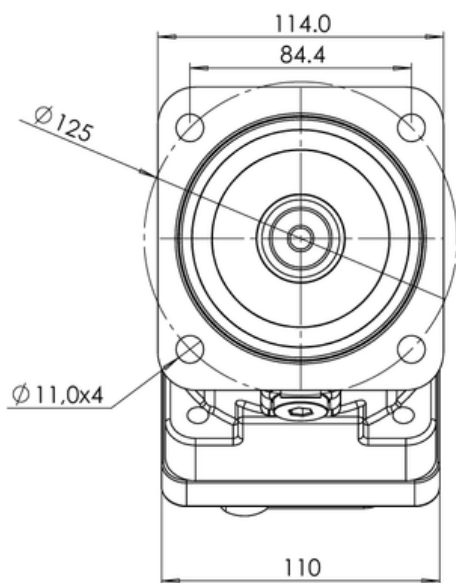
x 1000 rpm	25,00 cc
x 1500 rpm	37,50 cc
Max. Continuous Pump Speed	2300 rpm
Max. Limited Pump Speed	2700 rpm
Max. Continuous Pressure	350 bar
Max. Intermit. Peak Pressure	400 bar
Max. Torque at 350 bar	146 Nm
Weight without inlet fitting	9,50 kg
Weight with inlet fitting	9,90 kg
Torque without inlet fitting	8,82 N.m
Torque with inlet fitting	9,23 N.m
Rotation	CW-CCW
Fluid	Min.B.Hyd.Oil

25

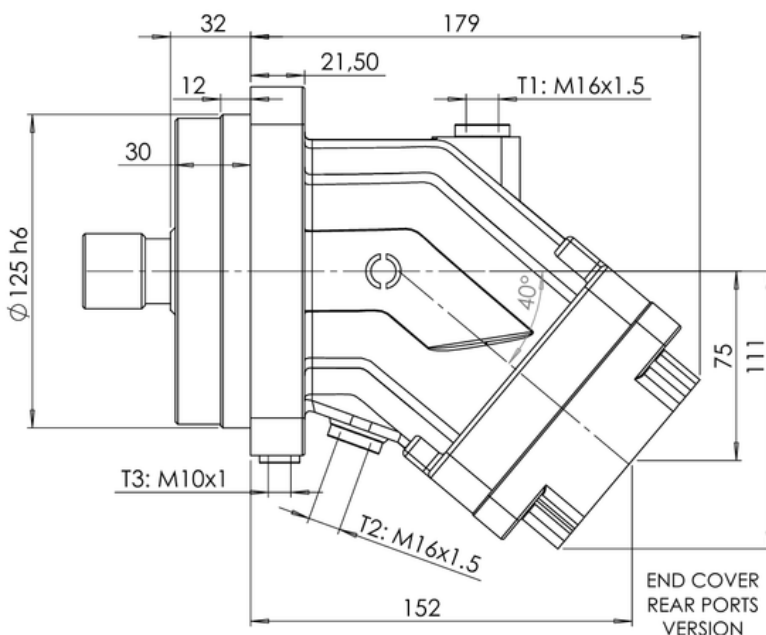
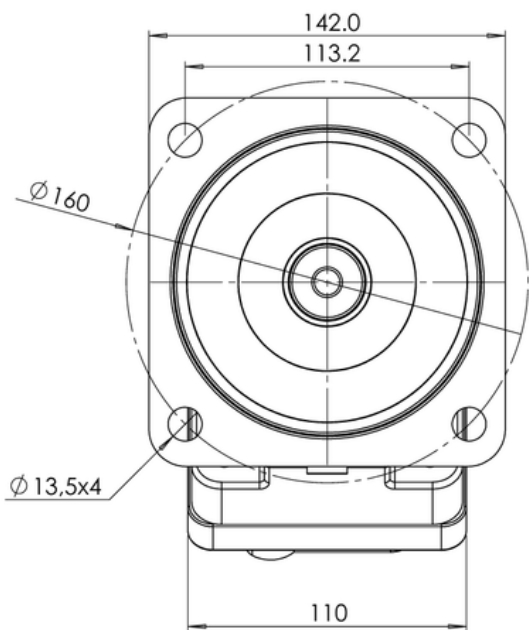


MOUNTING FLANGE (ISO3019-2)

-ISO 4h Ø100



-ISO 4h Ø125



-PORTING OPTIONS

▼ **SAE FLANGE REAR PORTS AVAILABLE (SAE 3/4 (6000 PSI) x2) HIGH PRESSURE SERIES (Bi-directional), Ordering Code: FS**



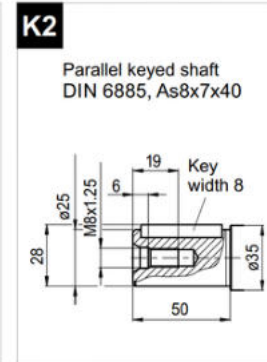
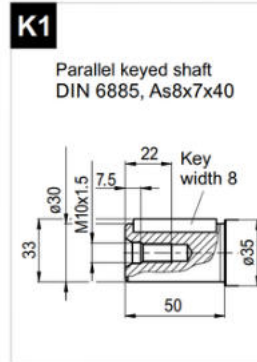
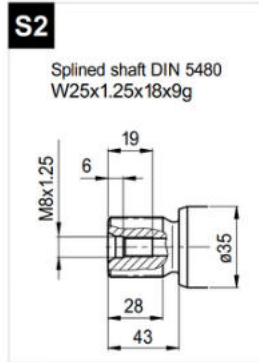
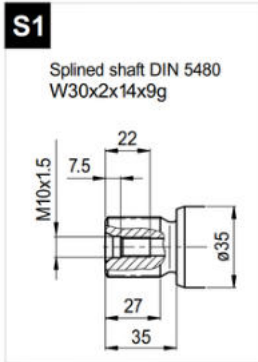
REAR
(Code:R)



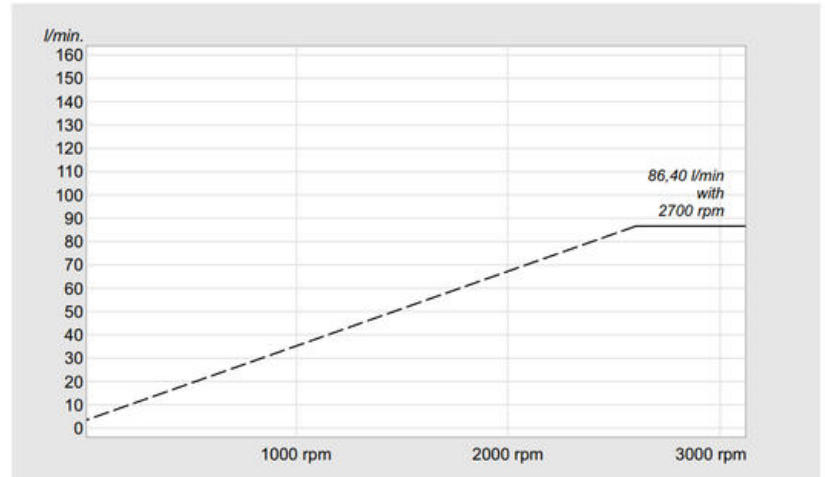
REAR SUCTION & REAR+SIDE PRESSURE
Code:(RSR)



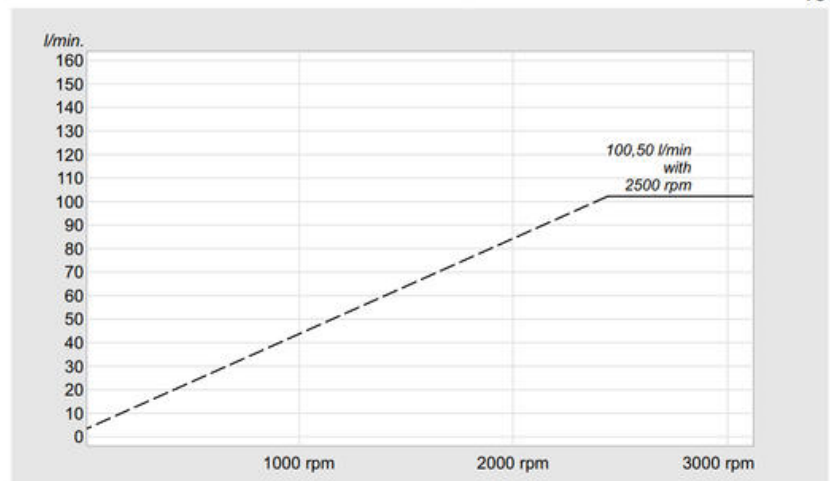
-SHAFT OPTIONS



x 1000 rpm	32,00 cc
x 1500 rpm	48,00 cc
Max. Continuous Pump Speed	2250 rpm
Max. Limited Pump Speed	2700 rpm
Max. Continuous Pressure	350 bar
Max. Intermit. Peak Pressure	400 bar
Max. Torque at 350 bar	190 Nm
Weight without inlet fitting	10,50 kg
Weight with inlet fitting	10,90 kg
Torque without inlet fitting	11,00 N.m
Torque with inlet fitting	11,52 N.m
Rotation	CW-CCW
Fluid	Min.B.Hyd.Oil

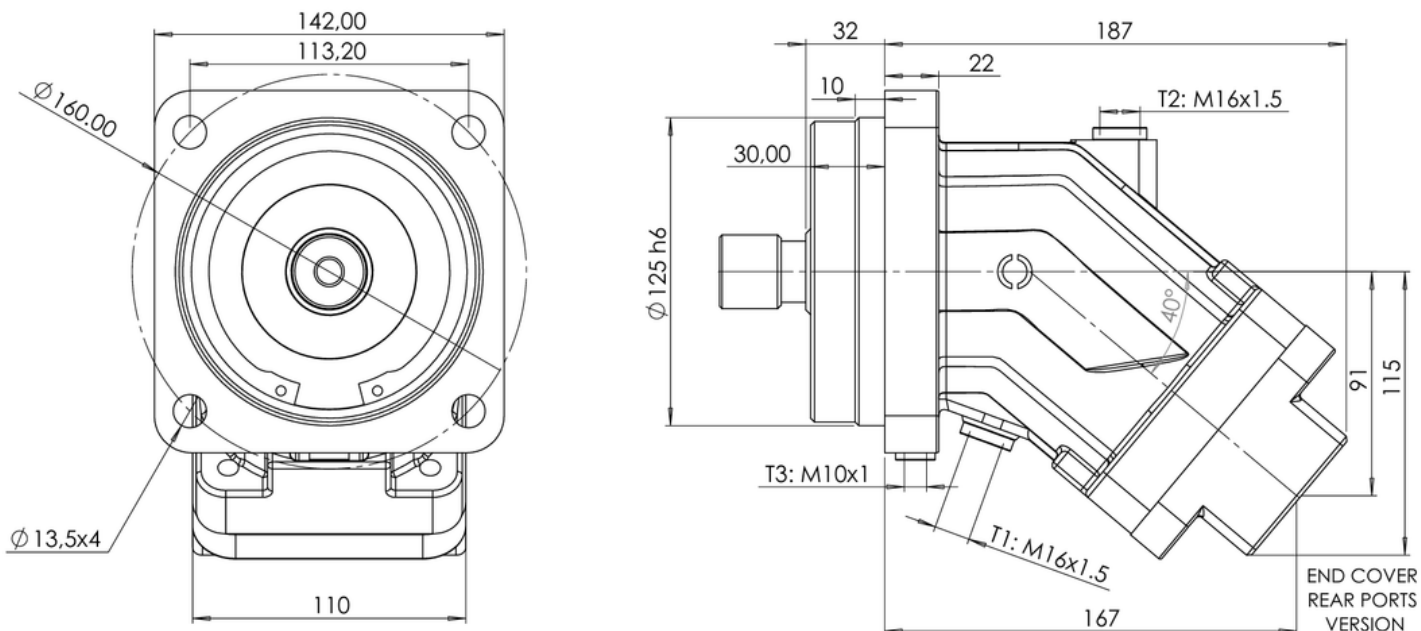


x 1000 rpm	40,20 cc
x 1500 rpm	60,30 cc
Max. Continuous Pump Speed	1900 rpm
Max. Limited Pump Speed	2500 rpm
Max. Continuous Pressure	350 bar
Max. Intermit. Peak Pressure	400 bar
Max. Torque at 350 bar	240 Nm
Weight without inlet fitting	10,50 kg
Weight with inlet fitting	10,90 kg
Torque without inlet fitting	11,12 N.m
Torque with inlet fitting	11,40 N.m
Rotation	CW-CCW
Fluid	Min.B.Hyd.Oil



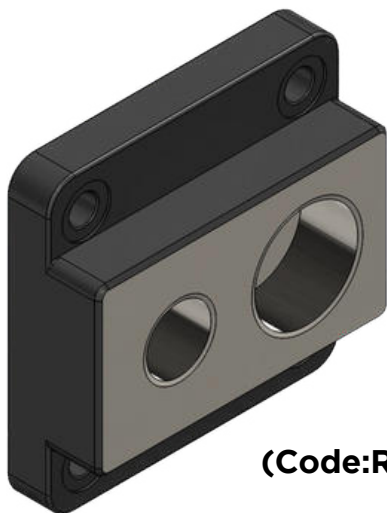
MOUNTING FLANGE (ISO3019-2)

-ISO 4h Ø125



-PORTING OPTIONS

▼ SAE FLANGE REAR PORTS AVAILABLE (SAE 1" (6000 PSI) x2) HIGH PRESSURE SERIES (Bi-directional), Ordering Code: FS



(Code:R)

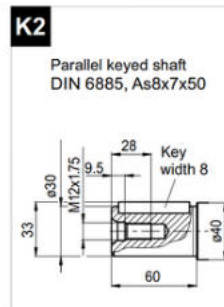
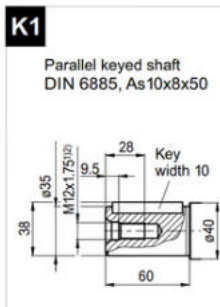
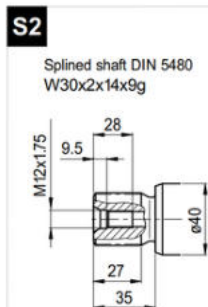
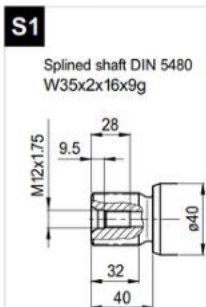
REAR



Code:(RSR)

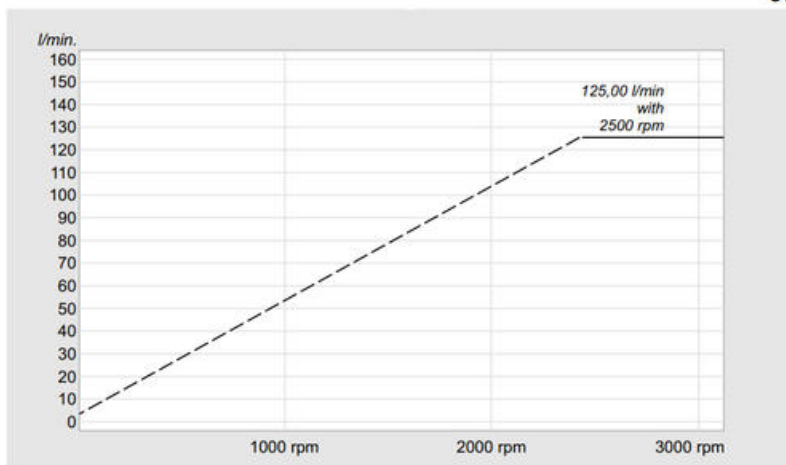
REAR SUCTION & REAR+SIDE PRESSURE

-SHAFT OPTIONS



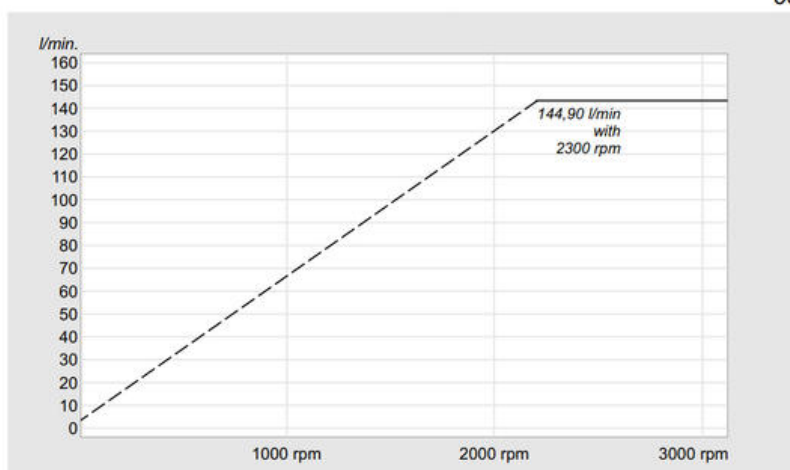
x 1000 rpm	50,00 cc
x 1500 rpm	75,00 cc
Max. Continuous Pump Speed	1900 rpm
Max. Limited Pump Speed	2500 rpm
Max. Continuous Pressure	350 bar
Max. Intermit. Peak Pressure	400 bar
Max. Torque at 350 bar	292 Nm
Weight without inlet fitting	11,00 kg
Weight with inlet fitting	11,40 kg
Torque without inlet fitting	11,72 N.m
Torque with inlet fitting	12,20 N.m
Rotation	CW-CCW
Fluid	Min.B.Hyd.Oil

50



x 1000 rpm	63,00 cc
x 1500 rpm	94,50 cc
Max. Continuous Pump Speed	1900 rpm
Max. Limited Pump Speed	2300 rpm
Max. Continuous Pressure	350 bar
Max. Intermit. Peak Pressure	400 bar
Max. Torque at 350 bar	360 Nm
Weight without inlet fitting	11,50 kg
Weight with inlet fitting	11,90 kg
Torque without inlet fitting	11,82 N.m
Torque with inlet fitting	12,28 N.m
Rotation	CW-CCW
Fluid	Min.B.Hyd.Oil

63



C-2PS: Ordering Code and Specifications Table

Type Code	Displacement (cm ³)	Rotation	Version	Sealing	End Cover	Mounting Flange	Shaft
C-2PS	12,18,25,32, 40,50,63	R, L (cw,ccw)	Special Classic (S,C)	Nitrile, Viton (N,V)	Rear, Rear Suction & Rear + Side Peassure (PSR)	According the Specifi-cations	According the Specifi-cations

ISO 3019-2		12	18	25	32	40	50	63
142	ISO 4h Ø100	•	•	•	•	•		
143	ISO 4h Ø125				•	•	•	•

S1	S2	K1	K2
----	----	----	----

S: Splined

Thread Specifications

	(R)			(RSR)	
	IN	OUT		IN	OUT
12	M27x2	M27x2	12	M27x2	M27x2
18	M33x2	M27x1,5	18	M33x2	M27x1,5
25	M33x2	M27x2	25	M33x2	M27x2
32	M42x2	M27x2	32	M42x2	M27x2
40	M42x2	M27x2	40	M42x2	M27x2
50	M42x2	M27x2	50	M42x2	M27x2
63	M42x2	M27x2	63	M42x2	M27x2

Ordering Code Example;

- End cover RSS
Sae thread

ISO 6149 (1)	BSP (B)	SEA O-Ring Boss (S)
M27x2	63/4"	1 1/16 - 12 Un-2B
M33x2	61"	1 5/16 - 12 Un-2B
M27x2	M27x2	15/8" - 12 Un-2B

- High vibration resistance and 630 bar pressure limit.
- SAE Flange 3/4" 6000 PSI x 2 High pressure series Rear Ports available for 32-40 cc
- SAE Flange 1" 6000 PSI x 2 High pressure series Rear Ports available for 50-63 cc

